







3-in-1 MagSafe Wireless Desk Charger

TLL151391



Made for

 **WATCH** | iPhone | MagSafe

-  Installation guide and operation instructions
-  Ghid de instalare și instrucțiuni de funcționare
-  Guía de instalación e instrucciones de funcionamiento
-  Guide d'installation et mode d'emploi
-  Guida all'installazione e istruzioni per l'uso
-  Einbauanleitung und Bedienungsanleitung



INTO YOUR FUTURE

Thank you for choosing Tellur products!

To ensure an optimum performance and safety, please read this user manual carefully before using the product. Keep this user manual safe for future references.

1. GENERAL SAFETY INFORMATIONS

1.1 WARNINGS

- Please, keep the charger away from water or other liquids.
- If you need to clean the charger, please, make sure it is not connected to the power supply.
- Use this product indoors. Avoid using near sources of increased heat or humidity.
- Respect the technical specifications of the product and do not use it outside the declared operating parameters.
- Unplug the device from power source when not in use for long periods of time.

1.2 ATTENTION

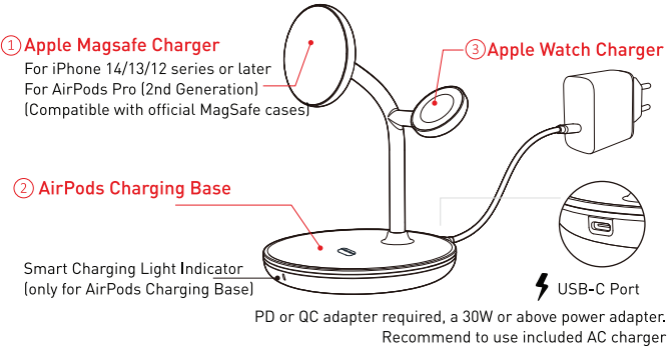
- Don't use the product if it is damaged in any way, shape, or form.
- Don't attempt to repair, disassemble, or modify this product.
- Don't place the product near any heat source or in direct sunlight.
- Don't place foreign objects like keys, magnetic cards, metal plates, etc... on the charging areas.

1.3 NOTES

- To ensure charging 3 devices safely and efficiently, please use the included power charger, cable, and adapters (if not use the appropriate adapter and quick charge cable, the charger may not charge your phone, or may not charge 2 devices simultaneously or may even damage the charger).
- Wireless charging power transmission can be influenced by external factors, not related to the device. Other charging protocols, room temperature, humidity, battery percentage of the device, age of the device battery and other factors can modify the behavior of the charger.
- We recommend using official MagSafe phone cases or any MagSafe certified phone cases.

2. PRODUCT OVERVIEW

2.1 PRODUCT DIAGRAM



PD or QC adapter required, a 30W or above power adapter.
Recommend to use included AC charger

Notes: Recommend to use the official MagSafe cases or other MFM cases.

2.2 MAIN FUNCTIONS

- Charging station with certified MagSafe technology that quickly and easily powers your iPhone, Apple Watch and compatible TWS earbuds all at once.
- Modern and minimalist design eliminates the need for many cables and chargers to power your devices.
- Using MagSafe technology, certified by Apple, strong magnets perfectly align your iPhone 12 or newer and deliver fast charging of up to 15W.
- You can easily charge and use the iPhone, either in landscape or portrait orientation. Integrated angle adjustment of MagSafe charger up to 15°.
- Overvoltage safety protection, temperature control and foreign object detection.

2.3 IN THE BOX

1. 1 x 3-in-1 MagSafe wireless desk charger
2. 1 x PD 30W Type-C port EU AC Wall Charger
3. 1 x US AC Charger Adapter
4. 1 x UK AC Charger Adapter
5. 1 x Type-C to Type-C PD cable 1.8 meters
6. 1 x Installation guide and operation instructions



2.4 NOTES

For full technical specifications please check chapter 5

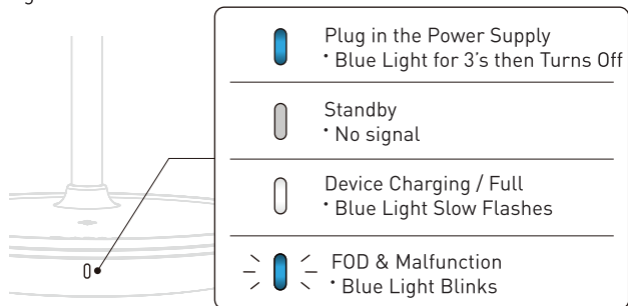
3. INSTALLING AND USING THE PRODUCT

3.1 PLUG AND POWER THE DEVICE

1. Connect the wireless charger 3 in 1 to included AC power plug through the type-C quick charge cable, to switch on the power.
2. Place your iPhone on the designated MagSafe charging pad to start charging
3. Place the Apple Watch on the designated charging pad to start charging
4. Place your compatible Airpods or TWS on the destined wireless charge area to start charging.

3.2 LED LIGHT INSTRUCTIONS

Light Mode

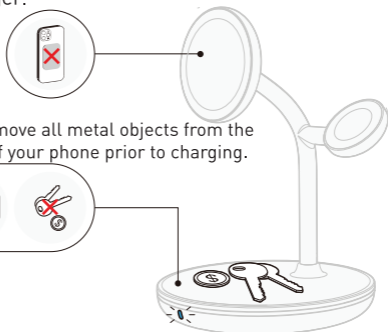


3.3 ATTENTION

FOD (Foreign Object Detection)

The light blinks when metal foreign objects are detected on the wireless charger.

× Metal Objects
Only supports MagSafe compatible devices.



Caution: Please remove all metal objects from the back of your phone prior to charging.



Caution: Do not place any credit card on charging pad to prevent damage or demagnetization.

3.4 COMPATIBLE DEVICES

- Smartphone: MagSafe Fast Charging up to 15W for iPhone 14/ 14 Plus/ 14 Pro/ 14 Pro Max/ iPhone 13 mini/ 13/ 13 Pro/ 13 Pro Max/ iPhone 12 mini/ 12/ 12 Pro/ 12 Pro Max
- TWS: 5W charging for AirPods 2/3/Pro and other TWS earbuds which support wireless charging
- Apple Watch: 2.5W charging for Apple Watch 1/2/3/4/5/6/SE/7/8/Ultra

3.5 NOTES

- For Troubleshooting please check chapter 4

4. TROUBLESHOOTING

- If you're experiencing interrupted or slow charging, check the following:
 - The back of your phone should not have any metal, pop sockets or credit cards.
 - If you are using a compatible MagSafe case, try removing the case and charge the iPhone directly.
- If you're failing to charge your device, please, try out the following:
 - Check if your device is charging with other type of charger.
 - Check the LED indicator of the charger if it is working properly.
 - Check if the AC Adapter is working properly.
- If you're using the wireless charger with the recommended AC adapter and cable and have removed any potential charging obstructions, but are still experiencing issues, try:
 - Replacing the cable connecting your wireless charger with the power supply.
 - Rebooting your phone.
 - Unplug the AC adapter and reinsert it.

5. TECHNICAL SPECIFICATIONS

Input:	PD 9V/3 A, 12V/2.5, 15V/2A , 30W Max
Input port:	Type-C
iPhone output:	MagSafe 15W(Max), 10W, 7.5W, 5W
AirPods 2/3/Pro output:	5W
Apple Watch output:	2.5W
Total output:	22.5W (Max)
Cable:	Type-C to Type-C, 3A - 1.8 meters
AC Charger:	PD 30W Type-C
iPhone position:	Landscape or portrait, 15° adjustable angle
Material:	PC + ABS + Metal
Product compatibilities:	MagSafe Fast Charging up to 15W for iPhone 14/ 14 Plus/ 14 Pro/ 14 Pro Max/ iPhone 13 mini/ 13/ 13 Pro/ 13 Pro Max/ iPhone 12 mini/ 12/ 12 Pro/ 12 Pro Max
	5W charging for AirPods 2/3/Pro and other TWS earbuds which support wireless charging
	2.5W charging for Apple Watch 1/2/3/4/5/6/SE/7/8/Ultra
Safety protections:	Overvoltage protection, temperature control and foreign object detection
Color:	White
Size:	109 x 159 x 125mm
Weight:	330g

Disposal and recycling information



The crossed-out wheeled-bin symbol on your product, battery, literature or packaging reminds

you that all electronic products and batteries must be taken to separate waste collection points at the end of their working lives; they must not be disposed of in the normal waste stream with household garbage.

It is the responsibility of the user to dispose of the equipment using a designated collection point or service for separate recycling of waste electrical and electronic equipment (WEEE) and batteries according to local laws.

Proper collection and recycling of your equipment helps ensure EEE waste is recycled in a manner that conserves valuable materials and protects human health and the environment, improper handling, accidental breakage, damage, and/or improper recycling at the end of its life may be harmful for health and environment.